



شركة الاستثمار الوطنية
NATIONAL INVESTMENTS COMPANY

Bursa Kuwait – Daily Market Report MENA Securities – Research & Studies Dep.

24th October 2022



www.nic.com.kw

DAILY MARKET COVERAGE REPORT

NIC MENA SECURITIES - RESEARCH AND STUDIES DEP



Kuwait Market Watch

Monday, October 24, 2022

Index	Close	DTD Chg Net	DTD (%)	YTD (%)	52W High	52W Low	MKT CAP Bn (KD)	PBV (X)	PE (X)	DY (%)
All Share Index	7,200.98	-65.55	-0.90%	2.24%	8,472.15	6,788.83	42.64	2.01	31.08	3.98
Premier Index	8,060.88	-83.58	-1.03%	5.52%	9,437.37	7,343.90	33.61	2.24	32.17	4.40
Main Index	5,397.82	-21.16	-0.39%	-8.30%	6,600.62	5,190.37	9.03	1.17	27.04	2.43
NIC 50 Index	9,039.87	-84.77	-0.93%	6.07%	10,553.82	8,195.69	32.91	2.24	32.17	4.40

Index	Value Mn(KD)	Volume (Mn share)
All Share Index	43.40	139.65
Premier Index	35.49	62.63
Main Index	7.91	77.02
NIC 50 Index	41.06	115.27

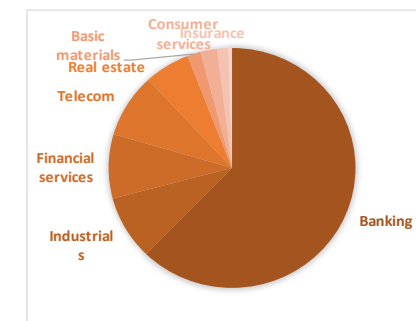
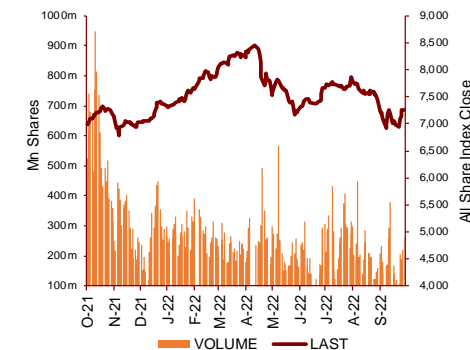
Today's Top 5 Gainer %	Close KD	Value KD	DTD (%)
Fujairah Cement Industries	0.038	20,823	7.95%
Kuwait Finance and Investment	0.062	15,565	6.90%
Shuaiba Industrial	0.156	16	6.12%
Kuwait and Gulf Link Transport	0.059	9,335	5.55%
Al Massaleh Real Estate	0.033	887	4.84%

Today's Top 5 by Value	Close KD	Trade Val Mn(KD)	DTD (%)
Kuwait Finance House	0.806	17.69	-1.47%
National Bank of Kuwait	1.050	6.16	-0.76%
Agility Public Warehousing	0.730	3.33	-2.14%
Aayan Leasing and Investment	0.126	1.95	3.28%
Mobile Telecommunications	0.586	1.11	-0.68%

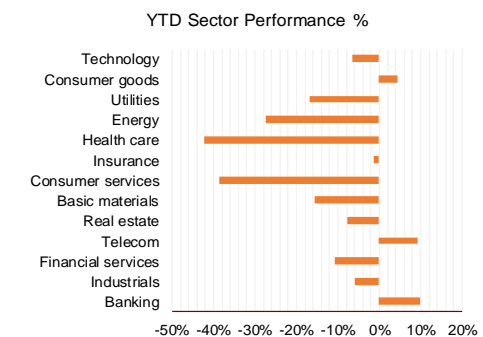
Market Breadth	UP	Down	No Chg
All Share Index	34	72	46
Premier Index	4	19	2
Main Index	30	53	44
NIC 50 Index	9	36	5

Today's Top 5 Loser %	Close KD	Value KD	DTD (%)
Salbookh Trading	0.018	12,332	-9.79%
Advanced Technology	0.480	16	-7.69%
Amar Finance and Leasing	0.060	1,791	-4.92%
Kuwait Foundry	0.275	2,808	-4.84%
Al-Enmaa Real Estate	0.054	21,873	-4.78%

Top 5 by Volume	Close KD	Trade Vol Mn(Shrs)	DTD (%)
Kuwait Finance House	0.806	21.88	-1.47%
Aayan Leasing and Investm	0.126	15.56	3.28%
GFH Financial Group	0.078	10.11	0.00%
Commercial Real Estate	0.101	7.31	-1.94%
Kuwait Real Estate	0.109	6.77	-1.80%



Sector	Close	DTD Chg Net	DTD (%)	YTD (%)	52W High	52W Low	MKT CAP Bn (KD)	PBV (X)	PE (X)	DY (%)
Banking	1,768.89	-15.360	-0.86%	10.0%	1,992.2	1,557.8	26.200	1.63	25.05	1.86
Industrials	1,061.88	-12.140	-1.13%	-5.9%	1,443.6	976.3	3.626	0.99	19.71	3.93
Financial services	1,263.19	-7.300	-0.57%	-10.7%	1,678.3	1,190.4	3.634	1.01	30.15	2.99
Telecom	1,182.57	-8.350	-0.70%	9.3%	1,514.7	1,055.9	3.619	1.35	14.12	2.86
Real estate	1,204.86	-20.570	-1.68%	-7.6%	1,438.0	1,155.8	2.516	0.69	35.34	1.34
Basic materials	847.86	-17.910	-2.07%	-15.5%	1,233.3	800.8	0.739	1.22	9.01	6.21
Consumer services	448.45	-1.050	-0.23%	-38.5%	785.3	449.5	0.918	2.26	27.52	1.76
Insurance	1,507.01	-4.940	-0.33%	-1.4%	1,675.7	1,434.5	0.601	0.82	44.56	5.31
Health care	447.63	-12.100	-2.63%	-42.3%	821.7	420.4	0.222	15.73	12.57	0.96
Energy	1,032.70	-5.800	-0.56%	-27.3%	1,592.9	975.7	0.209	0.81	21.14	2.35
Utilities	502.63	2.630	0.53%	-16.7%	650.0	494.7	0.210	2.14	14.55	9.47
Consumer goods	1,385.96	-11.290	-0.81%	4.5%	1,641.0	1,208.5	0.136	0.88	36.89	2.18
Technology	665.66	25.460	3.98%	-6.4%	843.9	539.1	0.009	0.77	NM	-
	7,200.98	-65.55	-0.90%	2.2%	8,472.2	6,788.8	42.64	2.01	31.08	3.98



DAILY MARKET COVERAGE REPORT

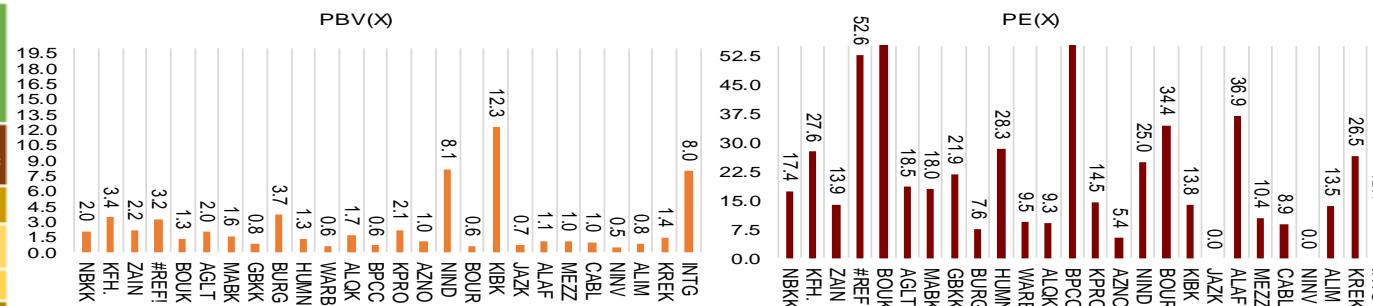
NIC MENA SECURITIES - RESEARCH AND STUDIES DEP



Premier Market

Monday, October 24, 2022

Premier Market	Price			Valuation Multiples			MKT Cap	Price Performance		Trading Indicators		ROE	ROA	52 Week (KD)		MKT Cap
	Close (KD)	Day Δ	Day % Δ	PBV(X)	PE(X)	DY%	Mn KD	MTD(%)	YTD (%)	Value (Mn KD)	(Mn Shrs)	(%)	(%)	High	Low	%
National Bank of Kuwait	1.050	-0.008	-0.76%	2.03	17.44	2.30	7,930	7%	11%	6.16	5.86	11.7%	1.5%	1.104	0.903	23.59%
Kuwait Finance House	0.806	-0.012	-1.47%	3.37	27.60	1.33	10,665	-4%	8%	17.69	21.88	12.4%	1.6%	1.039	0.720	31.73%
Mobile Telecommunications	0.586	-0.004	-0.68%	2.15	13.94	5.59	2,536	0%	-1%	1.11	1.90	15.6%	4.3%	0.698	0.564	7.54%
Boubyan Bank	0.804	-0.005	-0.62%	3.21	52.64	0.56	3,006	4%	14%	0.57	0.71	6.8%	0.8%	0.965	0.681	8.94%
Agility Public Warehousing	0.730	-0.016	-2.14%	1.27	57.30	2.23	1,844	9%	-5%	3.33	4.52	2.7%	2.2%	1.062	0.634	5.49%
Mabane Co.	0.851	-0.024	-2.74%	2.00	18.51	1.51	1,057	0%	17%	0.47	0.54	11.2%	5.4%	0.910	0.717	3.14%
Gulf Bank	0.339	-0.003	-0.88%	1.55	17.95	1.95	1,085	13%	29%	0.56	1.65	8.9%	0.9%	0.385	0.227	3.23%
Burgan Bank	0.218	-0.002	-0.91%	0.80	21.87	2.16	716	-3%	-8%	0.39	1.79	3.8%	0.7%	0.307	0.205	2.13%
Human Soft Holding	3.329	0.028	0.85%	3.65	7.63	12.12	405	2%	2%	0.20	0.06	48.7%	39.9%	3.704	3.006	1.20%
Warba Bank	0.239	0.000	0.00%	1.31	28.32	0.00	478	7%	-13%	0.65	2.74	4.8%	0.6%	0.298	0.216	1.42%
Qurain Petrochemical Industries	0.249	0.000	0.00%	0.61	9.53	7.23	267	-9%	-28%	0.11	0.45	6.4%	5.2%	0.403	0.210	0.80%
Boubyan Petrochemical	0.791	-0.028	-3.42%	1.67	9.26	7.33	412	-2%	-4%	0.13	0.17	19.1%	10.1%	1.125	0.769	1.23%
Kuwait Projects Company Holding	0.117	-0.001	-0.85%	0.62	302.56	4.24	286	-12%	-17%	0.24	2.03	0.2%	0.1%	0.215	0.112	0.85%
Shamal Az-Zour Al-Oula Power & Water	0.191	0.001	0.53%	2.14	14.55	9.47	210	-3%	-17%	0.09	0.46	19.1%	2.9%	0.247	0.188	0.63%
National Industries Group Holding	0.231	-0.002	-0.86%	0.98	5.36	4.77	498	1%	-3%	0.91	3.91	15.2%	6.5%	0.314	0.207	1.48%
Boursa Kuwait Securities Co	2.289	-0.050	-2.14%	8.06	25.02	2.78	460	9%	16%	0.12	0.05	33.9%	22.2%	2.870	1.800	1.37%
Kuwait International Bank	0.190	-0.001	-0.52%	0.61	34.41	2.01	201	-4%	-9%	0.41	2.14	1.7%	0.3%	0.259	0.186	0.60%
Jazeera Airways	1.683	-0.022	-1.29%	12.32	13.79	2.70	370	2%	32%	0.20	0.12	164.8%	12.1%	2.099	0.981	1.10%
Alafco Aviation Lease and Finance	0.178	-0.003	-1.66%	0.67	NM	0.00	169	3%	-17%	0.16	0.87	-15.9%	-3.4%	0.256	0.167	0.50%
Mezzan Holding	0.361	0.001	0.28%	1.05	36.89	4.36	112	-4%	-38%	0.39	1.07	2.8%	1.3%	0.624	0.358	0.33%
Gulf Cable and Electrical Industries	1.130	0.005	0.44%	1.04	10.43	5.33	235	5%	29%	0.13	0.12	11.0%	NM	1.850	0.853	0.70%
National Investments	0.236	-0.002	-0.84%	0.95	8.90	18.91	188	3%	9%	0.06	0.27	10.9%	8.9%	0.475	0.201	0.56%
Alimtia Investment Group	0.076	-0.001	-1.30%	0.45	NM	11.69	78	1%	-35%	0.11	1.47	-1.0%	-0.1%	0.140	0.069	0.23%
Kuwait Real Estate	0.109	-0.002	-1.80%	0.81	13.52	2.62	101	8%	-36%	0.74	6.77	6.0%	2.5%	0.187	0.097	0.30%
Integrated Holding	0.342	-0.004	-1.16%	1.43	26.45	2.89	87	-11%	-6%	0.23	0.67	5.4%	3.4%	0.478	0.335	0.26%
ALI ALGanim	0.784	-0.008	-1.01%	7.96	12.42	0.00	218	1%	nm	0.35	0.44	27.8%	10.9%	0.966	0.750	0.65%
Total		-83.58	-1.03%	2.24	32.17	4.40	33,613	1.3%	5.5%	35.49	62.20					100%



DAILY MARKET COVERAGE REPORT

NIC MENA SECURITIES - RESEARCH AND STUDIES DEP



Premier Market Company	Price			Valuation Multiples			MKT Cap Mn KD	Price Performance		ROE (%)	ROA (%)
	Close (KD)	Day Δ	Day % Δ	PBV(X)	PE (X)	DY%		MTD (%)	YTD (%)		
National Bank of Kuwait	1.050	-0.008	-0.76%	2.03	17.4	2.30	7,930	7.4%	11.4%	11.7%	1.5%
Kuwait Finance House	0.806	-0.012	-1.47%	3.37	27.6	1.33	10,665	-4.2%	8.1%	12.4%	1.6%
Mobile Telecommunications	0.586	-0.004	-0.68%	2.15	13.9	5.59	2,536	-0.2%	-0.8%	15.6%	4.3%
Boubyan Bank	0.804	-0.005	-0.62%	3.21	52.6	0.56	3,006	4.4%	13.6%	6.8%	0.8%
Agility Public Warehousing	0.730	-0.016	-2.14%	1.27	57.3	2.23	1,844	9.3%	-5.3%	2.7%	2.2%
Mabaneer Co.	0.851	-0.024	-2.74%	2.00	18.5	1.51	1,057	-0.5%	17.0%	11.2%	5.4%
Gulf Bank	0.339	-0.003	-0.88%	1.55	18.0	1.95	1,085	13.3%	28.7%	8.9%	0.9%
Burgan Bank	0.218	-0.002	-0.91%	0.80	21.9	2.16	716	-2.7%	-8.0%	3.8%	0.7%
Human Soft Holding	3.329	0.028	0.85%	3.65	7.6	12.12	405	1.7%	2.4%	48.7%	39.9%
Warba Bank	0.239	0.000	0.00%	1.31	28.3	0.00	478	7.2%	-12.8%	4.8%	0.6%
Qurain Petrochemical Industries	0.249	0.000	0.00%	0.61	9.5	7.23	267	-8.9%	-28.2%	6.4%	5.2%
Boubyan Petrochemical	0.791	-0.028	-3.42%	1.67	9.3	7.33	412	-2.4%	-3.9%	19.1%	10.1%
Kuwait Projects Company Holding	0.117	-0.001	-0.85%	0.62	302.6	4.24	286	-12.0%	-16.9%	0.2%	0.1%
Shamal Az-Zour Al-Oula Power & Water	0.191	0.001	0.53%	2.14	14.5	9.47	210	-2.6%	-16.7%	19.1%	2.9%
National Industries Group Holding	0.231	-0.002	-0.86%	0.98	5.4	4.77	498	1.3%	-3.3%	15.2%	6.5%
Boursa Kuwait Securities Co	2.289	-0.050	-2.14%	8.06	25.0	2.78	460	9.4%	15.8%	33.9%	22.2%
Kuwait International Bank	0.190	-0.001	-0.52%	0.61	34.4	2.01	201	-3.5%	-8.9%	1.7%	0.3%
Jazeera Airways	1.683	-0.022	-1.29%	12.32	13.8	2.70	370	1.8%	32.2%	164.8%	12.1%
Alafco Aviation Lease and Finance	0.178	-0.003	-1.66%	0.67	NM	0.00	169	3.4%	-17.0%	-15.9%	-3.4%
Mezzan Holding	0.361	0.001	0.28%	1.05	36.9	4.36	112	-3.7%	-37.7%	2.8%	1.3%
Gulf Cable and Electrical Industries	1.130	0.005	0.44%	1.04	10.4	5.33	235	4.6%	29.2%	11.0%	9.0%
National Investments	0.236	-0.002	-0.84%	0.95	8.9	18.91	188	2.6%	8.7%	10.9%	8.9%
Alimtiiaz Investment Group	0.076	-0.001	-1.30%	0.45	NM	11.69	78	0.9%	-34.7%	-1.0%	-0.1%
Kuwait Real Estate	0.109	-0.002	-1.80%	0.81	13.5	2.62	101	7.9%	-36.1%	6.0%	2.5%
Integrated Holding	0.342	-0.004	-1.16%	1.43	26.5	2.89	87	-11.1%	-6.5%	5.4%	3.4%
ALI ALGanim	0.784	-0.008	-1.01%	3.66	12.4	0.00	218	0.9%	nm	27.8%	10.9%
Total		-83.58	-1.03%	2.24	32.17	4.40	33,396	1.3%	5.5%		

Discription	Close (KD)	Day Δ	Day % Δ	50 Day	200 Day	14 Day	Mn KD	MTD(%)	YTD (%)	High	Low
Premier Index	8,061	-83.58	-1.03%	8,309	8,434	66	33,396	1.3%	5.4%	9,437	7,344

Top 5 Performrs (Today's Price Change)

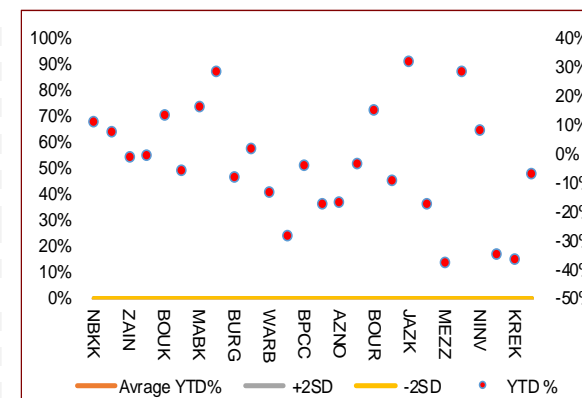
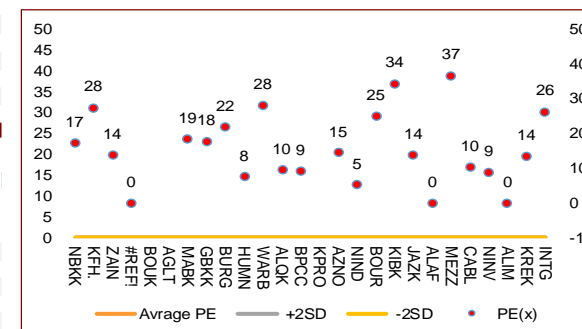
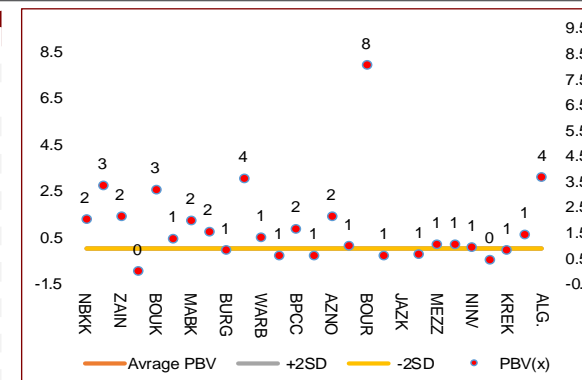
Human Soft Holding	3.329	0.028	0.85%	3.354	3.312	52	405	1.7%	2.4%	3.704	3.006
Shamal Az-Zour Al-Oula Power & Water	0.191	0.001	0.53%	0.198	0.212	38	210	-2.6%	-16.7%	0.247	0.188
Gulf Cable and Electrical Industries	1.130	0.005	0.44%	1.298	1.322	68	235	4.6%	29.2%	1.850	0.853
Mezzan Holding	0.361	0.001	0.28%	0.398	0.497	40	112	-3.7%	-37.7%	0.624	0.358
Ahli United Bank BSC	#N/A	#N/A	#N/A	0.305	0.285	50	#N/A	#N/A	#N/A	0.336	0.240

Middel Performrs (Today's Price Change)

Warba Bank	0.239	0.000	0.00%	0.238	0.261	78	478	7.2%	-12.8%	0.298	0.216
Qurain Petrochemical Industries	0.249	0.000	0.00%	0.292	0.345	42	267	-8.9%	-28.2%	0.403	0.210
Kuwait International Bank	0.190	-0.001	-0.52%	0.207	0.219	46	201	-3.5%	-8.9%	0.259	0.186
Boubyan Bank	0.804	-0.005	-0.62%	0.815	0.805	72	3,006	4.4%	13.6%	0.965	0.681
Mobile Telecommunications	0.586	-0.004	-0.68%	0.596	0.611	61	2,536	-0.2%	-0.8%	0.698	0.564
National Bank of Kuwait	1.050	-0.008	-0.76%	1.036	1.033	83	7,930	7.4%	11.4%	1.104	0.903
National Investments	0.236	-0.002	-0.84%	0.267	0.314	62	188	2.6%	8.7%	0.475	0.201
Kuwait Projects Company Holding	0.117	-0.001	-0.85%	0.143	0.163	46	286	-12.0%	-16.9%	0.215	0.112
National Industries Group Holding	0.231	-0.002	-0.86%	0.254	0.259	59	498	1.3%	-3.3%	0.314	0.207
Gulf Bank	0.339	-0.003	-0.88%	0.100	0.100	83	1,085	13.3%	28.7%	1.210	0.996
Burgan Bank	0.218	-0.002	-0.91%	0.232	0.254	62	716	-2.7%	-8.0%	0.307	0.205
Alimtiiaz Investment Group	0.076	-0.001	-1.30%	0.085	0.108	72	78	0.9%	-34.7%	0.140	0.069
Kuwait Finance House	0.806	-0.012	-1.47%	0.859	0.872	54	10,665	-4.2%	8.1%	1.039	0.720
Alafco Aviation Lease and Finance	0.178	-0.003	-1.66%	0.186	0.204	71	169	3.4%	-17.0%	0.256	0.167

Bottom 5 Performrs (Today's Price Change)

Kuwait Real Estate	0.109	-0.002	-1.80%	0.115	0.147	73	101	7.9%	-36.1%	0.187	0.097
Agility Public Warehousing	0.730	-0.016	-2.14%	0.774	0.856	75	1,844	9.3%	-5.3%	1.062	0.634
Boursa Kuwait Securities Co	2.289	-0.050	-2.14%	2.269	2.362	76	460	9.4%	15.8%	2.870	1.800
Mabaneer Co.	0.851	-0.024	-2.74%	0.846	0.812	59	1,057	-0.5%	17.0%	0.910	0.717
Boubyan Petrochemical	0.791	-0.028	-3.42%	0.874	0.938	57	412	-2.4%	-3.9%	1.125	0.769



DAILY MARKET COVERAGE REPORT

NIC MENA SECURITIES - RESEARCH AND STUDIES DEP



Banking Sector		Price			Valuation Multiples			MKT Cap	Price Performance		Trading Indicators		ROE	ROA	52 Week (KD)		MKT Cap
Company	Close (KD)	Day Δ	Day % Δ	PBV(X)	PE(X)	DY%	Mn KD	MTD(%)	YTD (%)	Value (Mn KD)	(Mn Shrs)	(%)	(%)	High	Low	%	
National Bank of Kuwait	1.050	-0.008	-0.76%	2.03	17.44	2.30	7,930	7.4%	11.4%	6.16	5.86	11.7%	1.5%	1.104	0.903	18.60%	
Kuwait Finance House	0.806	-0.012	-1.47%	3.37	27.60	1.33	10,665	-4.2%	8.1%	17.69	21.88	12.4%	1.6%	1.039	0.720	25.01%	
Boubyan Bank	0.804	-0.005	-0.62%	3.21	52.64	0.56	3,006	4.4%	13.6%	0.57	0.71	6.8%	0.8%	0.965	0.681	7.05%	
Commercial Bank of Kuwait	0.485	-0.001	-0.21%	1.15	12.11	4.12	961	0.0%	-3.0%	0.00	0.00	9.9%	1.9%	0.549	0.456	2.25%	
Gulf Bank	0.339	-0.003	-0.88%	1.55	17.95	1.95	1,085	13.3%	28.7%	0.56	1.65	8.9%	0.9%	0.385	0.227	2.54%	
Burgan Bank	0.218	-0.002	-0.91%	0.80	21.87	2.16	716	-2.7%	-8.0%	0.39	1.79	3.8%	0.7%	0.307	0.205	1.68%	
Ahli United Bank	0.260	0.000	0.00%	0.90	23.96	1.83	586	-0.4%	-11.7%	0.05	0.18	3.7%	0.7%	0.324	0.250	1.37%	
Warba Bank	0.239	0.000	0.00%	1.31	28.32	0.00	478	7.2%	-12.8%	0.65	2.74	4.8%	0.6%	0.298	0.216	1.12%	
Al Ahli Bank of Kuwait	0.324	0.000	0.00%	0.96	21.29	1.47	574	9.5%	33.9%	0.50	1.55	4.5%	0.6%	0.355	0.216	1.35%	
Kuwait International Bank	0.190	-0.001	-0.52%	0.61	34.41	2.01	201	-3.5%	-8.9%	0.41	2.14	1.7%	0.3%	0.259	0.186	0.47%	
Total Banking Sector - 10 Companies							26,200			26.97	38.48					61.44%	

Basic Materials		Price			Valuation Multiples			MKT Cap	Price Performance		Trading Indicators		ROE	ROA	52 Week (KD)		MKT Cap
Company	Close (KD)	Day Δ	Day % Δ	PBV(X)	PE(X)	DY%	Mn KD	MTD(%)	YTD (%)	Value (Mn KD)	(Mn Shrs)	(%)	(%)	High	Low	%	
Qurain Petrochemical Industries	0.249	0.000	0.00%	0.61	9.53	7.23	267	-8.86%	-28.24%	0.11	0.45	6.4%	5.2%	0.403	0.210	0.63%	
Boubyan Petrochemical	0.791	-0.028	-3.42%	1.67	9.26	7.33	412	-2.41%	-3.87%	0.13	0.17	19.1%	10.1%	1.125	0.769	0.97%	
Al Kout Industrial Projects	0.390	0.000	0.00%	1.40	4.93	10.26	39	-3.94%	-21.37%	0.00	0.00	30.5%	20.1%	0.545	0.390	0.09%	
Kuwait Foundry	0.275	-0.014	-4.84%	1.20	12.31	0.00	20	-5.17%	-21.68%	0.00	0.01	10.7%	10.3%	0.424	0.260	0.05%	
Total Basic Materials - 4 Companies							739			0.25	0.63					1.73%	

Consumer Goods		Price			Valuation Multiples			MKT Cap	Price Performance		Trading Indicators		ROE	ROA	52 Week (KD)		MKT Cap
Company	Close (KD)	Day Δ	Day % Δ	PBV(X)	PE(X)	DY%	Mn KD	MTD(%)	YTD (%)	Value (Mn KD)	(Mn Shrs)	(%)	(%)	High	Low	%	
Mezzan Holding	0.361	0.001	0.28%	1.05	36.89	4.36	112	-3.7%	-37.7%	0.39	1.07	2.8%	1.3%	0.624	0.358	0.26%	
Livestock Transport and Trading	0.112	-0.003	-2.61%	0.71	NM	0.00	23	-6.7%	-36.8%	0.00	0.01	-14.5%	-8.2%	0.196	0.112	0.05%	
Total Consumer Goods - 2 Companies							136			0.39	1.08					0.32%	

Consumer Services		Price			Valuation Multiples			MKT Cap	Price Performance		Trading Indicators		ROE	ROA	52 Week (KD)		MKT Cap
Company	Close (KD)	Day Δ	Day % Δ	PBV(X)	PE(X)	DY%	Mn KD	MTD(%)	YTD (%)	Value (Mn KD)	(Mn Shrs)	(%)	(%)	High	Low	%	
Jazeera Airways	1.683	-0.022	-1.29%	12.32	13.79	2.70	370	1.8%	32.2%	0.20	0.12	164.8%	12.1%	2.099	0.981	0.87%	
Kuwait National Cinema	0.850	0.000	0.00%	1.04	8.28	3.53	79	-4.5%	-3.6%	0.00	0.00	13.3%	6.1%	0.933	0.850	0.18%	
Oula Fuel Marketing	0.145	0.000	0.00%	0.90	15.64	3.45	59	0.0%	-7.1%	0.00	0.01	5.6%	2.9%	0.178	0.140	0.14%	
Al Soor Fuel Marketing	0.149	0.001	0.68%	0.87	18.88	3.38	60	-3.3%	-4.5%	0.00	0.02	4.8%	3.6%	0.175	0.142	0.14%	
Sultan Center Food Products	0.109	-0.005	-4.39%	0.66	0.91	0.00	30	-2.6%	-45.7%	0.00	0.01	74.2%	12.2%	0.269	0.103	0.07%	
Jiyad Holding	0.023	0.000	0.00%	0.26	NM	0.00	4	-13.9%	-71.5%	0.08	3.47	-16.2%	-10.9%	0.099	0.015	0.01%	
IFA Hotels and Resorts	0.027	0.000	0.00%	3.55	179.33	0.00	17	-1.4%	-49.7%	0.01	0.27	2.0%	0.4%	0.073	0.025	0.04%	
Kuwait Resorts	0.077	0.000	0.00%	0.50	10.80	3.83	15	-1.2%	-20.5%	0.00	0.00	4.8%	4.2%	0.110	0.067	0.04%	
Future Kid Entertainment and Real Estate	0.116	0.005	4.50%	0.96	9.71	0.00	13	2.8%	41.0%	0.00	0.04	10.4%	4.7%	0.130	0.074	0.03%	
Al Eid Food	0.234	0.000	0.00%	1.84	14.22	2.92	40	5.4%	1.4%	0.02	0.08	13.5%	10.1%	0.304	0.207	0.09%	
Kuwait Hotels	0.162	0.000	0.00%	2.03	18.75	3.09	9	-12.0%	131.4%	0.00	0.00	11.1%	7.4%	0.201	0.070	0.02%	
Palms Agro Production	0.077	0.000	0.00%	0.78	NM	0.00	4	0.0%	12.3%	0.00	0.00	-13.8%	-10.9%	0.083	0.043	0.01%	
ALI ALGanim	0.784	-0.008	-1.01%	3.66	12.42	0.00	218	0.9%	nm	0.35	0.44	27.8%	10.9%	0.966	0.750	0.51%	
Total Consumer Services - 13 Companies							918			0.66	4.45					2.15%	

DAILY MARKET COVERAGE REPORT

NIC MENA SECURITIES - RESEARCH AND STUDIES DEP

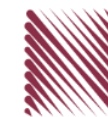


Health Care	Price			Valuation Multiples			MKT Cap	Price Performance		Trading Indicators		ROE	ROA	52 Week (KD)		MKT Cap
	Company	Close (KD)	Day Δ	Day % Δ	PBV(X)	PE(X)		DY%	Mn KD	MTD(%)	YTD (%)			Value (Mn KD)	(Mn Shrs)	
Al-Maidan Clinic for Oral Health Services	0.632	0.000	0.00%	2.51	13.90	0.00	142	0.0%	-54.1%	0.00	0.00	19.4%	12.5%	1.400	0.556	0.33%
Advanced Technology	0.480	-0.040	-7.69%	1.16	11.23	2.88	72	-7.7%	0.4%	0.00	0.00	10.7%	2.1%	0.595	0.450	0.17%
Yiaco Medical	0.450	0.000	0.00%	43.51	NM	0.00	8	0.0%	2.7%	0.00	0.00	-161.7%	-4.7%	0.480	0.399	0.02%
Total Health Care - 3 Companies							222			0.00	0.00					0.52%

Industrials	Price			Valuation Multiples			MKT Cap	Price Performance		Trading Indicators		ROE	ROA	52 Week (KD)		MKT Cap
	Company	Close (KD)	Day Δ	Day % Δ	PBV(X)	PE(X)		DY%	Mn KD	MTD(%)	YTD (%)			Value (Mn KD)	(Mn Shrs)	
Agility Public Warehousing	0.730	-0.016	-2.14%	1.27	57.30	2.23	1,844	9.3%	-5.3%	3.33	4.52	2.7%	2.2%	1.062	0.634	4.32%
Human Soft Holding	3.329	0.028	0.85%	3.65	7.63	12.12	405	1.7%	2.4%	0.20	0.06	48.7%	39.9%	3.704	3.006	0.95%
Alafco Aviation Lease and Finance	0.178	-0.003	-1.66%	0.67	NM	0.00	169	3.4%	-17.0%	0.16	0.87	-15.9%	-3.4%	0.256	0.167	0.40%
Kuwait Cement	0.205	-0.003	-1.44%	0.76	NM	2.40	146	-1.0%	-10.0%	0.02	0.08	-1.1%	-0.7%	0.295	0.194	0.34%
Gulf Cable and Electrical Industries	1.130	0.005	0.44%	1.04	10.43	5.33	235	4.6%	29.2%	0.13	0.12	11.0%	9.0%	1.850	0.853	0.55%
Integrated Holding	0.342	-0.004	-1.16%	1.43	26.45	2.89	87	-11.1%	-6.5%	0.23	0.67	5.4%	3.4%	0.478	0.335	0.20%
Kuwait Portland Cement	0.797	-0.009	-1.12%	1.13	16.86	8.68	80	-3.2%	-17.8%	0.01	0.01	6.8%	5.3%	1.240	0.751	0.19%
Educational Holding Group	2.590	0.000	0.00%	4.40	9.84	20.57	54	-13.7%	-35.3%	0.00	0.00	30.0%	17.2%	5.073	2.462	0.13%
United Projects for Aviation Services	0.211	0.000	0.00%	0.77	75.36	0.00	80	-4.5%	-14.9%	0.00	0.00	1.0%	0.6%	0.318	0.182	0.19%
Heavy Engineering Industries and Shipbuilding	0.616	-0.014	-2.22%	1.69	20.81	3.17	111	-3.9%	23.8%	0.12	0.20	8.2%	3.2%	0.960	0.442	0.26%
National Industries	0.190	0.000	0.00%	0.76	11.08	5.26	67	5.0%	-1.6%	0.00	0.00	6.8%	5.1%	0.260	0.181	0.16%
ACICO Industries	0.090	0.004	4.19%	0.39	NM	0.00	30	1.7%	-38.2%	0.06	0.75	-1.9%	-0.5%	0.208	0.076	0.07%
Kuwait Company for Process Plant Construction a	0.309	0.007	2.32%	1.21	19.57	8.20	37	2.7%	-36.3%	0.06	0.20	6.1%	3.5%	0.522	0.286	0.09%
Ras Al Khaimah for White Cement and Constructii	0.140	-0.001	-0.71%	1.24	27.79	5.88	70	-4.8%	11.9%	0.00	0.01	4.6%	3.7%	0.175	0.113	0.16%
Combined Group Contracting	0.430	0.003	0.70%	1.59	6.54	5.85	74	7.5%	20.6%	0.03	0.07	26.3%	5.8%	0.500	0.308	0.17%
Kuwait and Gulf Link Transport	0.059	0.003	5.55%	0.33	3.02	0.00	16	0.0%	-18.0%	0.01	0.16	11.6%	2.6%	0.106	0.054	0.04%
Shuaiba Industrial	0.156	0.009	6.12%	0.81	12.23	8.16	15	-3.7%	-34.7%	0.00	0.00	6.6%	5.4%	0.310	0.137	0.04%
National Cleaning	0.038	0.000	-0.79%	0.30	NM	0.00	9	11.5%	-33.0%	0.00	0.00	-13.9%	-4.1%	0.080	0.031	0.02%
Fujairah Cement Industries	0.038	0.003	7.95%	0.21	NM	0.00	14	-3.8%	-34.8%	0.02	0.59	-12.7%	-6.3%	0.069	0.028	0.03%
Mubarrad Holding	0.076	-0.001	-0.91%	0.60	6.51	6.49	12	-2.5%	-30.0%	0.00	0.05	9.3%	8.2%	0.130	0.071	0.03%
Specialities Group Holding	0.089	0.000	0.00%	0.47	9.63	7.67	14	5.5%	-28.7%	0.00	0.06	5.0%	3.6%	0.157	0.076	0.03%
Salbookh Trading	0.018	-0.002	-9.79%	0.58	NM	0.00	2	-6.9%	-55.3%	0.01	0.72	-51.7%	-28.6%	0.072	0.016	0.00%
Metal and Recycling	0.062	-0.003	-4.62%	0.84	NM	0.00	6	-11.5%	-31.6%	0.00	0.00	-12.0%	-2.0%	0.136	0.060	0.01%
Equipment Holding	0.032	0.000	0.00%	0.51	NM	0.00	3	-5.3%	-40.9%	0.00	0.00	-11.1%	-3.2%	0.079	0.030	0.01%
Jassim Transport & Stevedoring	0.320	0.000	0.00%	1.08	13.96	5.00	48	-2.7%	-21.4%	0.01	0.12	8.0%	6.3%	0.428	0.300	0.11%
Total Industrials - 24 Companies							3,626			4.41	9.24					8.50%

DAILY MARKET COVERAGE REPORT

NIC MENA SECURITIES - RESEARCH AND STUDIES DEP



Insurance	Price			Valuation Multiples			MKT Cap	Price Performance		Trading Indicators		ROE	ROA	52 Week (KD)		MKT Cap
	Company	Close (KD)	Day Δ	Day % Δ	PBV(X)	PE(X)		DY%	Mn KD	MTD(%)	YTD (%)			Value (Mn KD)	(Mn Shrs)	
Gulf Insurance Group	0.980	0.001	0.10%	1.14	4.19	10.83	278	-4.5%	-8.5%	0.00	0.00	28.6%	5.5%	1.200	0.871	0.65%
Al Ahleia Insurance	0.494	-0.003	-0.60%	0.83	6.86	7.04	107	3.8%	-1.6%	0.01	0.02	12.5%	4.4%	0.612	0.453	0.25%
Kuwait Insurance	0.480	-0.005	-1.03%	0.73	7.52	6.80	89	6.7%	25.3%	0.01	0.02	10.4%	6.1%	0.497	0.379	0.21%
Kuwait Reinsurance	0.286	0.000	0.00%	1.03	10.10	1.60	68	-3.1%	13.4%	0.00	0.00	10.8%	3.4%	0.373	0.217	0.16%
Bahrain Kuwait Insurance	0.191	0.000	0.00%	1.33	11.98	8.44	29	0.0%	0.0%	0.00	0.00	11.0%	2.1%	0.191	0.191	0.07%
Warba Insurance and Reinsurance	0.125	-0.004	-3.10%	0.55	8.97	7.75	21	-3.1%	-18.9%	0.00	0.01	6.2%	2.1%	0.170	0.119	0.05%
First Takaful Insurance	0.046	0.000	0.00%	0.61	287.50	0.00	5	-3.2%	-8.0%	0.00	0.00	0.2%	0.1%	0.081	0.034	0.01%
Wethaq Takaful Insurance	0.037	0.000	0.00%	0.33	19.37	0.00	4	3.6%	-27.3%	0.00	0.00	1.7%	1.7%	0.102	0.024	0.01%
Total Insurance - 8 Companies							601			0.02	0.05					1.41%

Energy	Price			Valuation Multipels			MKT Cap	Price Performance		Trading Indicators		ROE	ROA	52 Week (KD)		MKT Cap
	Company	Close (KD)	Day Δ	Day % Δ	PBV(X)	PE(X)		DY%	Mn KD	MTD(%)	YTD (%)			Value (Mn KD)	(Mn Shrs)	
National Petroleum Services	0.724	-0.002	-0.28%	1.83	13.01	4.82	70	-6.7%	-11.5%	0.00	0.00	14.5%	11.6%	0.880	0.625	0.16%
Independent Petroleum Group	0.430	0.000	0.00%	0.79	14.40	6.98	78	-9.1%	-26.9%	0.00	0.00	5.5%	1.0%	0.614	0.368	0.18%
Burgan for Well Drilling Trading and Maintenance	0.115	-0.003	-2.54%	0.43	9.90	2.31	30	5.1%	-11.7%	0.02	0.19	4.4%	1.4%	0.161	0.094	0.07%
Energy House Holding	0.021	0.000	-0.47%	0.78	NM	0.00	16	11.5%	-65.9%	0.00	0.00	-1.4%	-2.5%	0.086	0.019	0.04%
Gulf Petroleum Investment	0.016	0.000	0.00%	0.23	NM	0.00	7	-1.2%	-34.7%	0.00	0.28	-4.0%	-2.6%	0.031	0.013	0.02%
Senergy Holding	0.039	-0.001	-1.76%	0.79	47.26	0.00	8	-2.5%	-19.0%	0.00	0.01	1.7%	1.4%	0.063	0.036	0.02%
Total Energy - 6 Companies							209			0.03	0.48					0.49%

DAILY MARKET COVERAGE REPORT

NIC MENA SECURITIES - RESEARCH AND STUDIES DEP



Real Estate	Price		Valuation Multiples					MKT Cap	Performance		Trading Indicators		ROE	ROA	2 Week (KD)		MKT Cap
Company	Close (KD)	Day Δ	Day % Δ	PBV(X)	PE(X)	DY%	Mn KD	MTD(%)	YTD (%)	Value (Mn KD)	(Mn Shrs)	(%)	(%)	High	Low	%	
Mabane Co.	0.851	-0.024	-2.74%	2.00	18.51	1.51	1,057	-0.5%	17.0%	0.47	0.54	11.2%	5.4%	0.910	0.717	2.48%	
Salhia Real Estate	0.454	-0.010	-2.16%	1.54	19.83	3.08	234	1.8%	-7.9%	0.49	1.07	7.9%	3.2%	0.578	0.428	0.55%	
Commercial Real Estate	0.101	-0.002	-1.94%	0.63	10.59	4.85	177	3.9%	-17.6%	0.75	7.31	6.2%	3.3%	0.140	0.094	0.42%	
National Real Estate	0.141	-0.001	-0.70%	0.79	1.28	0.00	262	3.7%	-22.9%	0.14	1.00	64.5%	38.6%	0.212	0.125	0.61%	
Tamdeen Real Estate	0.324	0.000	0.00%	0.63	7.46	3.09	130	-0.3%	-4.4%	0.00	0.00	9.2%	3.9%	0.375	0.296	0.31%	
Kuwait Real Estate	0.109	-0.002	-1.80%	0.81	13.52	2.62	101	7.9%	-36.1%	0.74	6.77	6.0%	2.5%	0.187	0.097	0.24%	
United Real Estate	0.074	0.003	4.20%	0.45	223.13	0.00	80	-4.2%	-5.3%	0.00	0.00	0.2%	-0.1%	0.121	0.064	0.19%	
First Dubai for Real Estate Development	0.048	-0.001	-1.63%	0.47	32.89	0.00	35	6.1%	-53.4%	0.03	0.69	1.5%	1.2%	0.120	0.044	0.08%	
Al Mazaya Holding	0.052	0.001	2.79%	0.51	45.55	0.00	32	9.1%	-34.5%	0.24	4.80	1.1%	0.6%	0.089	0.043	0.08%	
Ajial Real Estate Entertainment	0.282	0.000	0.00%	0.42	17.40	1.77	55	2.5%	-7.2%	0.00	0.00	2.4%	2.0%	0.345	0.268	0.13%	
Injazzat Real Estate Development	0.080	0.000	0.13%	0.48	6.79	6.26	27	-4.8%	-20.1%	0.00	0.04	7.0%	3.6%	0.114	0.070	0.06%	
Munshaat Real Estate Projects	0.062	0.000	0.00%	1.91	11.72	0.00	20	-11.4%	-13.3%	0.00	0.00	17.4%	1.5%	0.079	0.052	0.05%	
Aayan Real Estate	0.066	-0.001	-0.76%	0.47	63.46	0.00	27	6.9%	-25.4%	0.02	0.35	0.7%	1.4%	0.105	0.056	0.06%	
Al Argan International Real Estate	0.085	-0.002	-2.30%	0.29	31.87	0.00	22	11.8%	-25.6%	0.01	0.06	0.9%	0.3%	0.144	0.073	0.05%	
Al-Enmaa Real Estate	0.054	-0.003	-4.78%	0.62	NM	0.00	24	-19.0%	-24.2%	0.02	0.40	-5.9%	NM	0.091	0.050	0.06%	
Arkan Al Kuwait Real Estate	0.119	-0.005	-4.03%	0.87	12.09	4.84	30	-2.5%	0.0%	0.00	0.00	7.4%	2.3%	0.152	0.113	0.07%	
Kuwait Business Town Real Estate	0.053	0.000	0.76%	0.66	14.62	0.00	30	1.6%	-35.5%	0.08	1.47	3.8%	2.8%	0.100	0.046	0.07%	
Dalqan Real Estate	0.209	-0.002	-0.95%	1.89	195.37	0.00	13	-2.3%	-2.8%	0.00	0.02	1.0%	1.0%	0.278	0.195	0.03%	
Sokouk Holding	0.023	-0.001	-3.75%	0.56	NM	0.00	13	-11.2%	-26.4%	0.02	0.65	-2.9%	-1.7%	0.038	0.020	0.03%	
Tijara and Realestate Investment	0.052	0.000	-0.38%	0.47	7.96	5.77	19	8.8%	-14.9%	0.01	0.29	6.0%	3.2%	0.089	0.044	0.04%	
Al-Arabiya Real Estate	0.029	-0.001	-4.23%	0.37	NM	0.00	15	1.0%	-26.7%	0.05	1.57	-23.1%	-7.3%	0.052	0.026	0.03%	
Aqar Real Estate Investments	0.053	-0.001	-2.57%	0.45	17.38	6.13	12	-10.0%	-31.0%	0.01	0.23	2.6%	2.1%	0.097	0.052	0.03%	
Mashaer Holding	0.054	0.000	0.00%	0.64	NM	0.00	10	1.3%	-22.9%	0.00	0.00	-6.5%	-3.2%	0.086	0.049	0.02%	
Dar Al Thuraya Real Estate	0.170	0.000	0.00%	1.47	25.07	0.00	25	0.0%	61.9%	0.00	0.00	6.0%	5.3%	0.172	0.092	0.06%	
Osos Holding Group	0.105	0.000	0.00%	0.92	8.36	9.52	11	8.2%	0.0%	0.00	0.00	11.2%	7.1%	0.147	0.094	0.03%	
Al Massaleh Real Estate	0.033	0.002	4.84%	0.51	NM	0.00	8	-21.9%	-40.5%	0.00	0.03	-15.4%	-3.2%	0.060	0.030	0.02%	
Kuwait Remal Real Estate	0.010	0.000	1.00%	1.28	NM	0.00	3	-10.5%	-47.6%	0.03	3.31	-110.3%	-12.4%	0.024	0.010	0.01%	
Kuwait Real Estate Holding	0.037	0.000	0.00%	0.69	13.30	0.00	7	-0.8%	-30.5%	0.00	0.00	5.1%	1.7%	0.059	0.032	0.02%	
Taameer Real Estate Investment	0.024	0.000	-0.42%	0.38	NM	0.00	5	18.0%	-42.6%	0.01	0.22	-6.5%	-4.9%	0.054	0.018	0.01%	
Sanam Real Estate	0.065	0.000	0.00%	0.85	28.97	0.00	8	9.1%	-17.7%	0.00	0.00	2.9%	2.8%	0.100	0.053	0.02%	
Mena Real Estate	0.030	-0.001	-2.89%	0.28	NM	0.00	4	-5.2%	-37.8%	0.01	0.42	-6.8%	-5.4%	0.105	0.030	0.01%	
Al Masaken International Real Estate Developmen	0.031	0.001	2.67%	0.48	NM	0.00	3	9.2%	-31.7%	0.00	0.00	-1.1%	-0.4%	0.069	0.027	0.01%	
Real Estate Trade Centers	0.050	0.000	-0.20%	0.28	20.96	0.00	7	-12.1%	-28.4%	0.00	0.01	1.3%	1.1%	0.123	0.043	0.02%	
Land United Real Estate	0.068	0.000	0.00%	0.60	NM	0.00	10	0.0%	-27.6%	0.00	0.00	-4.8%	-1.5%	0.144	0.052	0.02%	
Total Real Estate - 34 Companies							2,516			3.13	31.24					5.90%	

DAILY MARKET COVERAGE REPORT

NIC MENA SECURITIES - RESEARCH AND STUDIES DEP



Technology	Price			Valuation Multiples			MKT Cap Mn KD	Price Performance		Trading Indicators		ROE (%)	ROA (%)	52 Week (KD)		MKT Cap %
	Close (KD)	Day Δ	Day % Δ	PBV(X)	PE(X)	DY%		MTD(%)	YTD (%)	Value (Mn KD)	(Mn Shrs)			High	Low	
Automated Systems	0.092	0.004	3.98%	0.77	NM	0.00	9	4.7%	-6.4%	0.00	0.04	-3.4%	-3.0%	0.116	0.074	0.02%
Total Technology - 1 Companies				0.77	NM	0.0%	9			0.00	0.04	-3.40%	-2.96%			0.02%

Telecom	Price			Valuation Multiples			MKT Cap Mn KD	Price Performance		Trading Indicators		ROE (%)	ROA (%)	52 Week (KD)		MKT Cap %
	Company	Close (KD)	Day Δ	Day % Δ	PBV(X)	PE(X)		DY%	MTD(%)	YTD (%)	Value (Mn KD)			(Mn Shrs)	High	
Mobile Telecommunications	0.586	-0.004	-0.68%	2.15	13.94	5.59	2,536	-0.2%	-0.8%	1.11	1.90	15.6%	4.3%	0.698	0.564	5.95%
Kuwait Telecommunications	0.579	-0.001	-0.17%	2.61	13.34	5.17	578	4.5%	35.7%	0.05	0.09	20.1%	10.9%	1.189	0.418	1.36%
National Mobile Telecommunications	0.980	-0.015	-1.51%	0.95	15.07	3.52	491	4.6%	59.5%	0.03	0.03	6.2%	3.6%	1.280	0.615	1.15%
AAN Digital Services	0.016	0.000	0.00%	0.60	NM	0.00	14	0.0%	-2.4%	0.00	0.00	NM	NM	0.020	0.016	0.03%
Hayat Communications	0.055	0.002	4.56%	0.42	NM	0.00	5	-11.3%	-50.4%	0.00	0.04	-0.7%	-0.3%	0.124	0.051	0.01%
Telecom - 5 Companies							3,624			1.20	2.06					8.50%

Utilities	Price			Valuation Multiples			MKT Cap Mn KD	Price Performance		Trading Indicators		ROE (%)	ROA (%)	52 Week (KD)		MKT Cap %
	Company	Close (KD)	Day Δ	Day % Δ	PBV(X)	PE(X)		DY%	MTD(%)	YTD (%)	Value (Mn KD)			(Mn Shrs)	High	
Shamal Az-Zour Al-Oula Power & Water	0.191	0.001	0.53%	2.14	14.55	9.47	210	-2.6%	-16.7%	0.09	0.46	19.1%	2.9%	0.247	0.188	0.49%
Total Utilities - 1 Companies							210			0.09	0.46					0.49%

Total Market 156 Companies				2.01	31.08	3.98	42,643			43.40	139.65					100%
-----------------------------------	--	--	--	-------------	--------------	-------------	---------------	--	--	--------------	---------------	--	--	--	--	-------------

End of Report

The information contained in this document is proprietary to NIC and is for use only by the persons to whom it is issued. This document is confidential and may not be distributed either in part or in whole without the express agreement of NIC. It is intended solely for the use of the individual or entity to whom it is addressed and others authorized to receive it.

Note : ROE and ROA is calculated based on LFY net profit & shareholders' equity and LFY Operating Profits & Total Assets

Sources : National Investments Company Research and Studies Departments, Boursa, Refinitiv.



شركة الاستثمار الوطنية
NATIONAL INVESTMENTS COMPANY

Sharq, Al Mutanabi Street, Khaleejia Tower | P.O. Box 25667, Safat 13117, Kuwait

T.: +965 2226 6666 | Fax: +965 2226 6793 | www.nic.com.kw